

## Verfügbare Produktvarianten

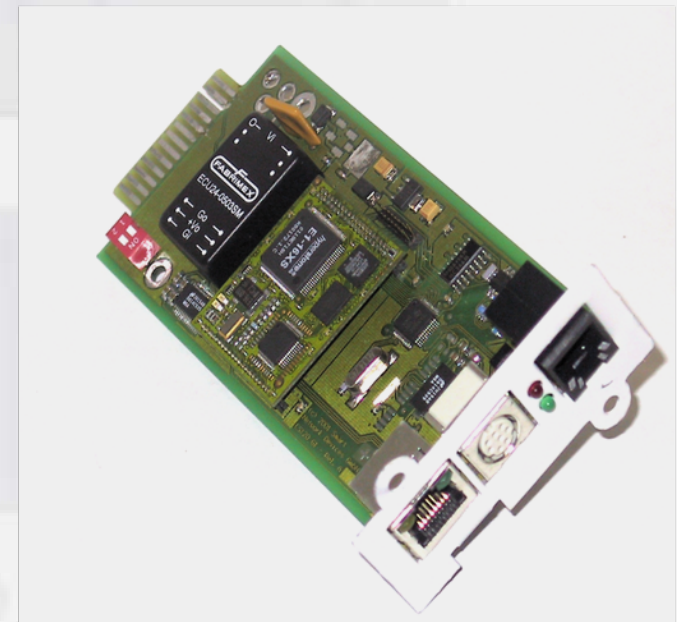
- AR Comfort 10-0
- AR Comfort 10-12 (internal 12min. battery)
- AR Comfort 10-15 (internal 15min. battery)
  
- AR Comfort 15-0
- AR Comfort 15-7 (internal 7min. battery)
- AR Comfort 15-9 (internal 9min. battery)
- AR Comfort 15-20 (internal 20min. battery)
  
- AR Comfort 20-0
- AR Comfort 20-5 (internal 5min. battery)
- AR Comfort 20-12 (internal 12min. battery)
- AR Comfort 20-15 (internal 15min. battery)
  
- AR Comfort 30-0
- AR Comfort 30-7 (internal 7min. battery)
- AR Comfort 30-9 (internal 9min. battery)
  
- AR Comfort 40-0
- AR Comfort 40-6 (internal 6min. battery)
  
- AR Comfort 60-0
- AR Comfort 80-0



# APOSTAR AR Comfort

## Options

- matching design of battery cabinets
- matching design of manual bypass
- parallel operation capability
- additional add-ons such as  
SNMP-Slot-Adapter, etc.
- isolation transformer
- APOSafe



# APOSTAR AR Comfort

## Highlights

- High active power - output power factor 0.9 High efficiency
- up to 96% in constant conversion operation
- and 98% in Eco-Line Interactive operation
- high reliability
- Sinusoidal input current THDi < 3%
- Standard communication interfaces
- 1x RS 232, 1x AS 400, 1x USB
- 3x potential-free changeover contacts



## Highlights

- redundant and power-parallel configuration:  
of up to 6 units from 10-80kVA
- 50>60 or 60>50 Hz frequency converter as standard;  
Activation via the operator control panel
- Sinusoidal input current THDi < 3%
- input power factor from 0.99.
- adjustable output voltage range
- static and manual maintenance bypass
- reverse-power protection as standard



# APOSTAR AR Comfort

## AR Comfort 10 bis 80kVA



- Black Start
- EPO connector for emergency-off command
- DB15 socket, marked REMOTE
- DB9 plug, marked RS232
- SNMP-Slot

# APOSTAR AR Comfort 10 - 20

	AR Comfort 10	AR Comfort 15	AR Power Comfort 20
--	---------------	---------------	---------------------

### Output

Rated Power	10 kVA	15 kVA	20 kVA
Active Power	9 kW	13,5 kW	18 kW
Current	14,5 A	22 A	29 A
Power factor	0,9 (ind.)		
Voltage	380 – 400 – 415 V		
Frequency	50 / 60Hz ± 0,01%		

### Input

Voltage	380/400/415 V ± 20%		
Frequency	40 – 72 Hz		
cos φ	0,99		

### General Data

Dimensions	440 x 850 x 1320mm		
Weight	105 kg	115 kg	120 kg



# APOSTAR AR Comfort 30 - 40

	AR Comfort 30	AR Power Comfort 40
<b>Output</b>		
Rated Power	30 kVA	40 kVA
Active Power	27 kW	36 kW
Current	43,5 A	58 A
Power factor	0,9 (ind.)	
Voltage	380 – 400 – 415 V	
Frequency	50 / 60Hz ± 0,01%	
<b>Input</b>		
Voltage	380/400/415 V ± 20%	
Frequency	40 – 72 Hz	
cos φ	0,99	
<b>General Data</b>		
Dimensions	440 x 850 x 1320mm	
Weight	135 kg	145 kg



# APOSTAR AR Comfort 60 - 80

## AR Comfort 60

## AR Comfort 80

### Output

Rated Power	60 kVA	80 kVA
Active Power	54 kW	72 kW
Current	87 A	116 A
Power factor	0,9 (ind.)	
Voltage	380 – 400 – 415 V	
Frequency	50 / 60Hz ± 0,01%	

### Input

Voltage	380/400/415 V ± 20%
Frequency	40 – 72 Hz
cos φ	0,99

### General Data

Dimensions	500 x 850 x 1600 mm
------------	---------------------

Weight	190 kg	200 kg
--------	--------	--------



# APOSTAR AR Comfort

Signalling of operational status of the UPS is supplied by:

crystal display (LCD)

▪ 6 warning lights:

- Mains power
- Battery power
- Load on bypass
- Stand-by / alarm
- Low battery
- Eco-Line Interactive operation

▪ an audible signal

